

# IBM Mainframe Computing Course

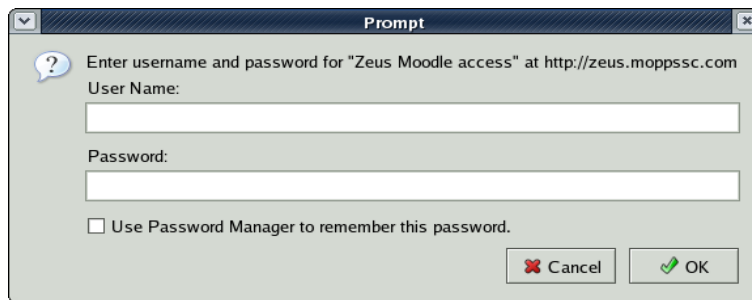
## Online Access

Malcolm Beattie, IBM  
beattiem@uk.ibm.com  
19 Jan 2006

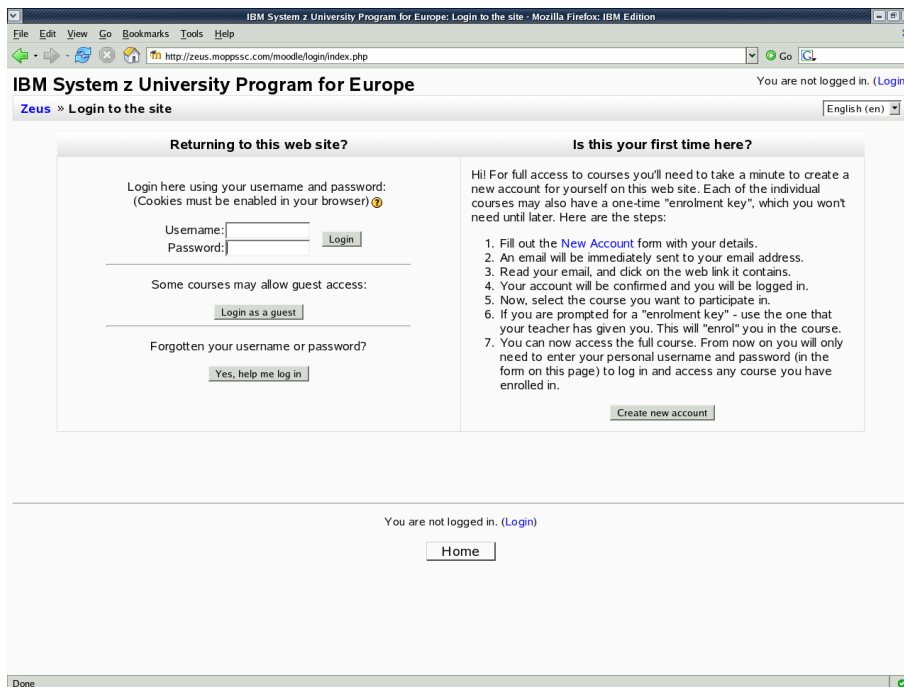
### Access to Moodle

Moodle is the Course Management System being used for the course. It is hosted on a Linux virtual machine running on the Zeus system. To access it go to the URL <http://zeus.moppssc.com/moodle>

In the authentication dialog that appears, use the general username and password you have been told

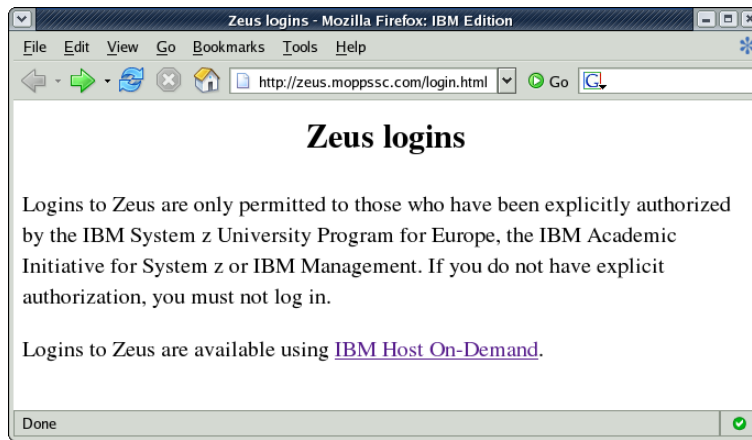


At the main Moodle login screen that appears, use your personal username and password that you have been told (guest logins are not permitted) and use the Login button.

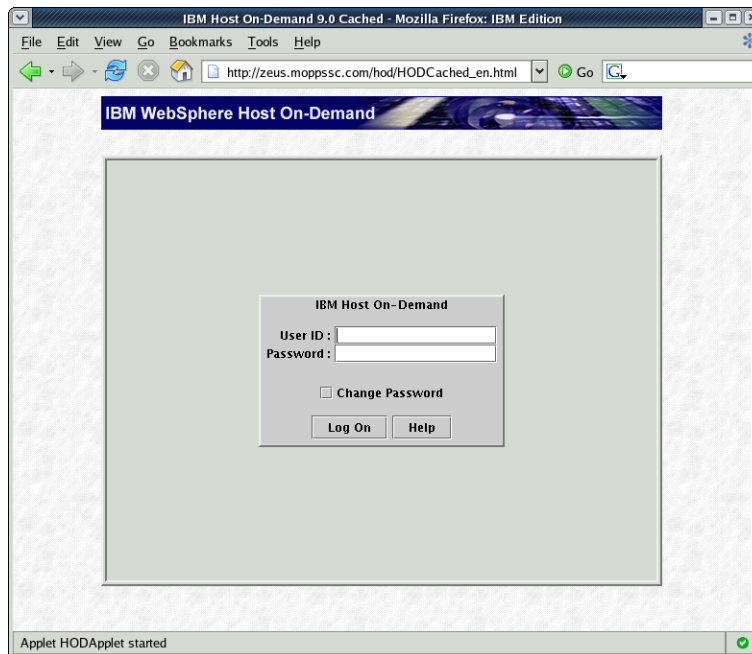


## Access to the Zeus system

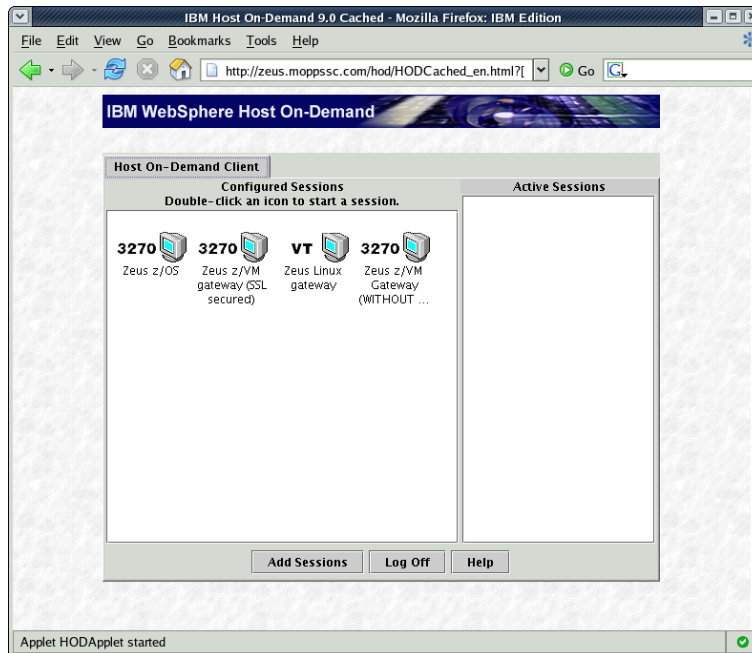
To get 3270 terminal emulator access to the Zeus system, you can use a Java2-enabled browser to go to the URL <http://zeus.moppssc.com/login.html>



Click on the [IBM Host On-Demand](#) link. The first time you access this Host On-Demand application, it will attempt to download its 3270 terminal emulation Java program into your browser. Your browser will probably require you to permit this explicitly. You will then see the main Host On-Demand login screen.



Use the Zeus HoD general username and password you have been given. You will then see the Host On-Demand application's choice of hosts



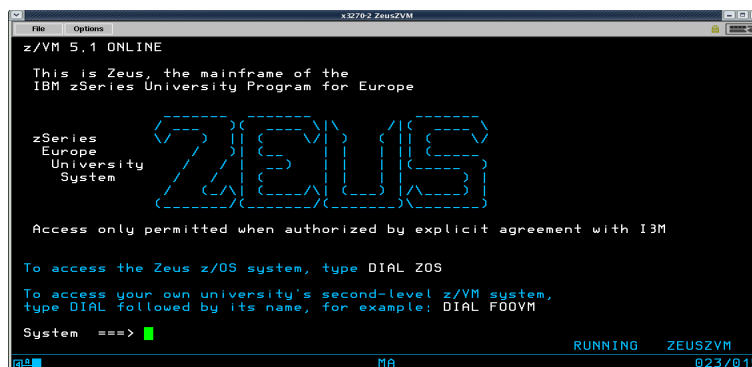
From here, you can access the z/OS system by double clicking on one of the following:

- the “Zeus z/VM gateway (SSL secured)” icon and then using the DIAL ZOS command (see below)
- the “Zeus z/OS” icon (though this is not SSL secured and causes all data, including passwords, to be sent and received in clear plaintext).

### Using the Zeus z/VM gateway

You can connect to the Zeus z/VM gateway either by Host On-Demand (as above) or with another tn3270 terminal emulator (such as x3270 or IBM Personal Communicator). If using your own tn3270 emulator, the hostname to connect to is zeuszvm.moppssc.com (IP address 129.35.161.130). For an SSL-protected connection, use port 992 and, if necessary, import the Zeus public certificate into your terminal emulator from <http://zeus.moppssc.com/hod/zeussself-public.crt> . If you use x3270, you do not need to import the certificate and you can simply connect using the command `x3270 L:zeuszvm.moppssc.com:992`

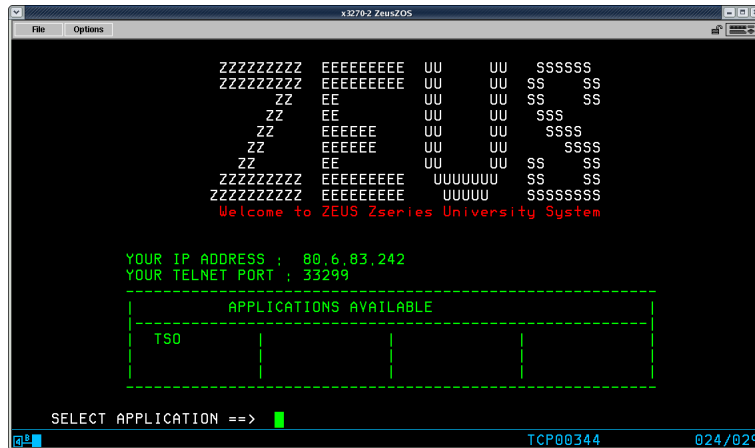
When you connect to the Zeus z/VM gateway you will see the following logon screen



To use the gateway to get to the Zeus z/OS system, hit the Tab key to get to the “System ==>” prompt, type the command “DIAL ZOS” and hit the Enter key on your terminal emulator (some tn3270 terminal emulators use the right-hand Ctrl key to perform the Enter function). On the resulting screen, you will have a “==>” prompt at which you can use the TSO or IBMSM commands, as detailed below.

## Using a direct TCP/IP connection to Zeus z/OS

To get a direct (but non SSL-secured) TCP/IP connection to the Zeus z/OS system, you can use the “Zeus z/OS” icon from Host On-Demand (as mentioned above) or else use your own tn3270 terminal emulator (such as x3270 or IBM Personal Communicator). If you use your own tn3270 terminal emulator, configure it to connect to hostname zeuszos.moppssc.com (IP address 129.35.161.131) on the default telnet port (which is port 23). Whichever way you connect, you will see the z/OS TCP/IP logon screen



At the “==>” prompt you can use either the TSO or IBMSM command, as detailed below.

## Using the TSO or IBMSM commands to login to Zeus z/OS

At the “==>” on either the TCP/IP logon screen or the screen you reach after typing “DIAL ZOS” from the z/VM gateway, you can type either TSO or IBMSM and then hit Enter. You will then be prompted for your personal z/OS userid and password to complete your login.